



Karachi Stock Exchange Office

Suite 624-627, KSE Building
Stock Exchange Road Karachi.
Telephone: +92 (21) 244 1179
Fax: +92 (21) 244 3434
Email: info@munirkhanani.com



TRADE CAST

Version 3.2.2

[TradeCast User Guide](#)

Login Screen



Following window will appear.

The screenshot displays the Trade Cast software interface. The main window shows a table of stock data for Ferozsons Laboratories Ltd. (Pharma and Bio Tech Sector). The table includes columns for Mkt, Scrip, Market Cap, BVol, Buy, Sell, Svol, LastPrice, Change, %Change, Trade, Period, and P/E. The current price is 349.03, with a change of -0.01 (-0.15%).

Mkt	Scrip	Market Cap	BVol	Buy	Sell	Svol	LastPrice	Change	%Change	Trade	Period	P/E
REG	PSO	92,604m	100	349.05	349.89	1,000	349.03	0.39	0.11	Trade	Q1 2016	13.35
REG	KEL	191,926m	136,500	6.85	6.86	10,000	6.85	-0.01	-0.15	Trade	Q1 2016	6.78
REG	NML	32,878m	500	95.50	95.98	2,500	95.99	0.06	0.06	Trade	Q1 2016	8.40
REG	OGDC	451,124m	100	117.10	117.24	200	117.15	0.17	0.15	Trade	FY 2015	5.17
REG	PPL	233,234m	500	125.50	125.60	100	125.50	1.55	1.25	Trade	FY 2015	6.81
REG	ABL	103,549m	1,000	86.55	87.49	1,000	86.55	-0.16	-0.18	Trade	Q3 2015	6.90
REG	MCB	218,288m	100	207.01	207.50	2,700	207.01	-0.99	-0.48	Trade	Q3 2015	8.97
REG	HBL	280,682m	5,000	180.80	180.95	600	180.95	-1.97	-1.08	Trade	Q3 2015	9.02
REG	UBL	186,932m	2,900	150.60	150.89	800	150.60	-2.11	-1.38	Trade	Q3 2015	8.52
REG	DGKC	69,394m	900	165.25	165.49	1,000	165.20	-1.36	-0.82	Trade	Q1 2016	9.10
REG	NBP	114,311m	1,000	61.00	61.09	2,500	61.00	-0.01	-0.02	Trade	Q3 2015	7.61
REG	HASCOL	14,337m	100	143.06	143.35	500	143.05	0.75	0.53	Trade	Q1 2015	22.40
REG	EFOODS	106,450m	100	151.80	151.90	1,000	151.75	-1.07	-0.70	Trade	HY 2015	119.76
REG	FCCL	52,552m	3,000	39.84	39.85	10,000	39.85	-0.38	-0.94	Trade	Q1 2016	12.77
REG	FEROZ	25,379m	300	826.01	834.00	200	826.70	-8.73	-1.04	Trade	Q1 2016	60.78

On the right side, there are two 'MarketDepth By Order' panels for FSO (L.Trade: 349.03). The top panel shows order details for Pakistan State Oil Co Ltd. - Oil and Gas Sector, including columns for Flag, Volume, Price, and Upper Cap. The bottom panel shows a similar view for the same sector.

At the bottom, a 'Message Window' displays activity logs, including order cancellations and trade confirmations. The status bar at the very bottom shows 'Connection Strength', 'Feed Server Connected', 'Trade Server Connected', 'KSE Status Open', and 'Previous Vol 135.517m'.

Buy Window (F4)

Buy (Ferozsons Laboratories Ltd.) ✕

Market	Order Type	Volume	Scrip	Price	Account	PIN
REG	Limit	100	FEROZ	0	M084	
Disc Volume		0	Limit Price	0	<input type="checkbox"/> Save PIN	
		Send Order				

Buy Vol	Buy	Sell	Sell Vol	Change	Last Trade	Lower Lock	Upper Cap	Total Volume
300	826.01	834.00	200	-8.73	826.70	789.58	872.68	2,200

Please enter Volume.
[Forgot PIN?](#) **Settings**

Sell Window (F5)

Sell (Ferozsons Laboratories Ltd.) ✕

Market	Order Type	Volume	Scrip	Price	Account	PIN
REG	Limit	100	FEROZ	0	M084	
Disc Volume		0	Limit Price	0	<input type="checkbox"/> Save PIN	
		Send Order				

Buy Vol	Buy	Sell	Sell Vol	Change	Last Trade	Lower Lock	Upper Cap	Total Volume
300	826.01	834.00	100	2.87	834.00	789.58	872.68	2,300

Please enter Volume.
[Forgot PIN?](#) **Settings**

Bunch Order Window (F6)

×

Market	Type	Order	Volume	Scrip	Price	Account	Limit Price
REG	Limit	Buy					
REG	Limit	Buy					
REG	Limit	Buy					
REG	Limit	Buy					
REG	Limit	Buy					

PIN Save Pin [Forgot PIN?](#)

Market	Scrip	BVol	Buy	Sell	SVol	Change	Last Trade	Lower Lock	Upper Cap

Change Order (F10)

×

Market	Order Type	Volume	Scrip	Price	Account	PIN
REG	Limit	100		0		

Disc Volume Limit Price Save PIN

Order No.

Buy Vol	Buy	Sell	Sell Vol	Change	Last Trade	Lower Lock	Upper Cap	Total Volume
0	0.00	0.00	0	0.00	0.00	0.00	0.00	0

i Please enter Order Number. Settings

Short Sell Window (F8)

×

Market	Order Type	Volume	Scrip	Price	Account	PIN
REG	Limit	100	KEL	0	M084	

Disc Volume Limit Price Save PIN

Buy Vol	Buy	Sell	Sell Vol	Change	Last Trade	Lower Lock	Upper Cap	Total Volume
129,500	6.85	6.87	28,500	0.01	6.87	5.86	7.86	859,000

i Please enter Volume. Forgot PIN? Settings

MBO (Ctrl + F2) & MBP (Ctrl + F3)

Market: REG Scrip: FCCL L.Trade: 15.59 Details

Flag	Volume	Price	Price	Volume	Flag
dc	3,500	15.57	15.59	500	dc
dc	15,000	15.55	15.59	500	dc
dc	2,000	15.53	15.59	1,000	dc
dc	15,000	15.52	15.60	4,000	dc
dc	25,000	15.51	15.60	500	dc
dc	4,000	15.51	15.60	90,000	dc
dc	5,000	15.51	15.60	500	dc
dc	2,500	15.51	15.60	1,000	dc
127,000		15.51	15.60	99,500	
Tot. Vol.	Avg. Prc.	Avg. Prc.	Tot. Vol.		

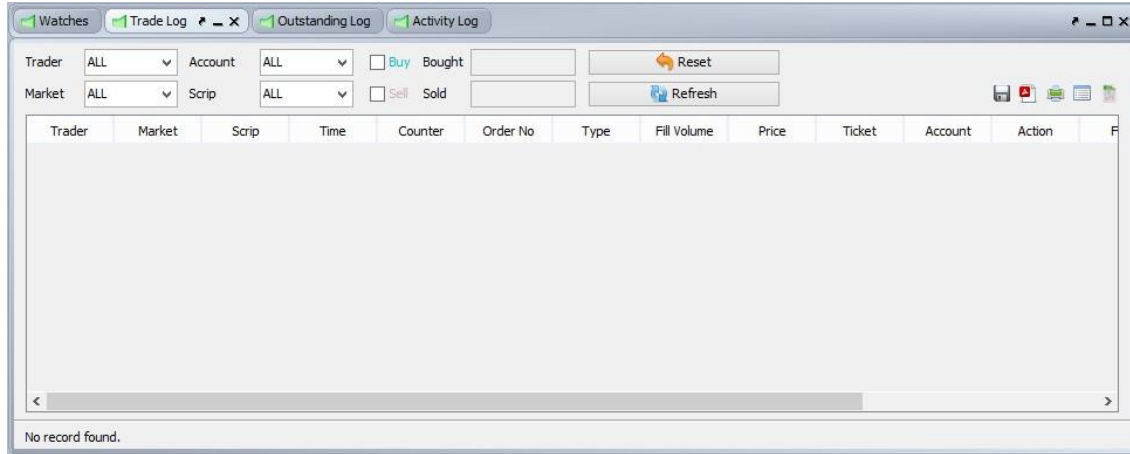
Fauji Cement Co Ltd. - Constructio...

Market: REG Scrip: FCCL L.Trade: 15.59 Details

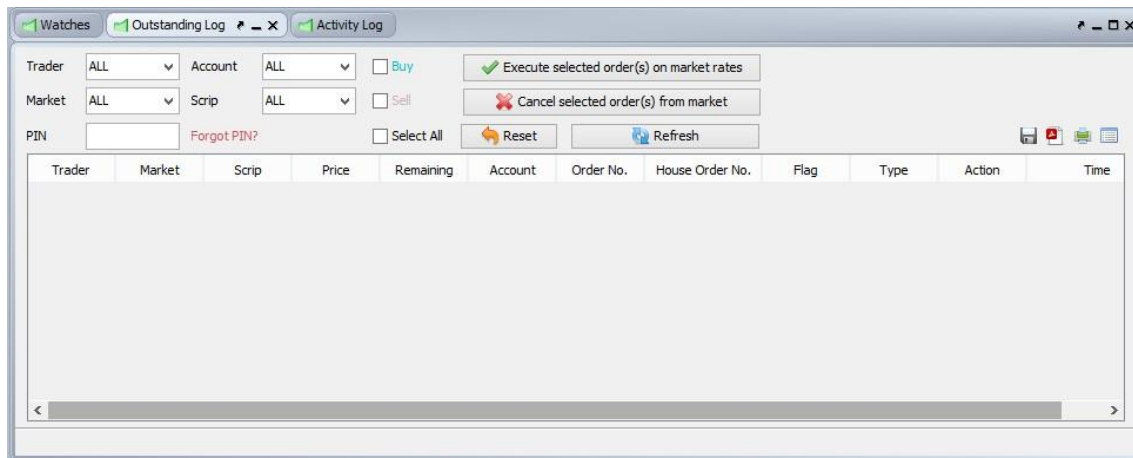
Flag	Volume	Price	Price	Volume	Flag
1	3,500	15.57	15.59	2,000	3
1	15,000	15.55	15.60	121,500	11
1	2,000	15.53	15.61	2,000	3
1	15,000	15.52	15.62	500	1
4	36,500	15.51	15.63	6,000	3
9	133,500	15.50	15.64	500	1
1	5,000	15.49	15.65	177,000	13
1	1,000	15.47	15.66	1,500	2
256,000		15.50	15.63	336,500	
Tot. Vol.	Avg. Prc.	Avg. Prc.	Tot. Vol.		

Fauji Cement Co Ltd. - Constructio...

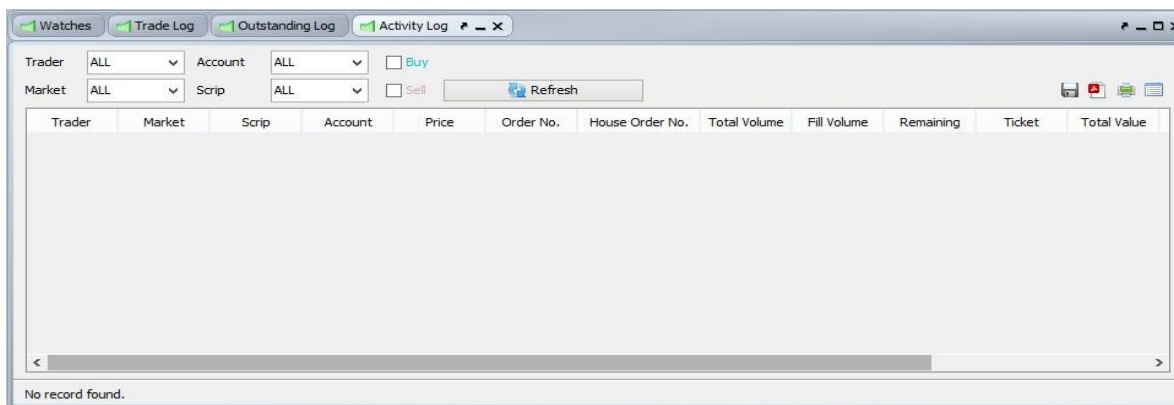
Trade Log (Ctrl + F6)



Outstanding Log (Ctrl + F5)



Activity Log (Ctrl + F7)



Top 30 Movers (Ctrl + T)

Top 30 Movers						
By Volume						
By Price Increase						
By % Increase						
By Price Decrease						
By % Decrease						
Scrip	Company	Last	Change	%Change	Volume	Trades
TRG	TRG Pakistan Ltd. - Support Services ...	27.33	-0.03	-0.11	2,974,000	940
PAEL	Pakistan Elektron Ltd. - Household Go...	60.59	0.85	1.42	2,675,500	1,189
PAELR2	Pakistan Elektron Ltd.(R) - Sector	18.75	0.01	0.05	2,460,500	871
BOP	Bank Of Punjab. - Commercial Banks S...	8.43	-0.11	-1.29	2,214,500	251
FNEL	First National Equities Limited. - Finan...	2.22	-0.10	-4.31	1,826,000	349
DCL	Dewan Cement Limited. - Constructio...	12.20	0.06	0.49	1,759,500	552
OGDC	Oil & Gas Development Company Ltd. ...	117.02	0.04	0.03	1,577,400	1,013
JSCL	Jahangir Siddiqui & Company Ltd. - Fi...	21.46	-0.15	-0.69	1,218,000	480
SGMLR	Shakarganj Limited.(R) At Par - Sector	0.70	-0.19	-21.35	1,023,000	51
PIBTL	Pakistan Intl. Bulk Terminal Ltd. - Indu...	27.64	-0.45	-1.60	1,016,000	525
UBL	United Bank Ltd.(XD) - Commercial Ba...	150.51	-2.20	-1.44	980,600	518
SING	Singer Pakistan Ltd.(XR) - Household ...	23.25	0.24	1.04	943,000	432
KEL	K-Electric Limited. - Electricity Sector	6.85	-0.01	-0.15	941,500	98
MLCF	Maple Leaf Cement Factory Ltd.(XD) -...	86.97	-0.83	-0.95	832,500	112
NIB	NIB Bank Limited - Commercial Banks S...	1.87	0.00	0.00	774,500	123
CLOV	Clover Pakistan Limited. - Food Produ...	99.62	4.74	5.00	766,000	884
ENGRO	Engro Corporation Limited. - Chemical...	305.50	-0.99	-0.32	748,400	697
FCCL	Fauji Cement Co Ltd.(XD) - Constructi...	39.65	-0.58	-1.44	713,500	245
DGKC	D. G. Khan Cement Co. Ltd. - Constru...	165.00	-1.56	-0.94	695,300	584
HBL	Habib Bank Limited. - Commercial Bank...	180.40	-2.52	-1.38	693,800	263
TRSM	Trust Mod. - Equity Investment Instru...	4.50	0.40	9.76	654,000	18
BYCO	BYCO Petroleum Pak Ltd. - Oil and Ga...	17.37	-0.29	-1.64	590,000	246
EFOODS	Engro Foods Limited. - Food Producer...	151.05	-1.77	-1.16	563,400	928
SSGC	Sui Southern Gas Co Ltd. - Multiutilitie...	26.66	-0.05	-0.19	546,000	251
PPL	Pakistan Petroleum Limited. - Oil and ...	125.20	1.25	1.01	461,000	485
GHNL	Ghandhara Nissan Ltd. - Automobile a...	164.84	2.70	1.67	407,100	930
PRL	Pakistan Refinery Ltd. - Oil and Gas S...	42.99	-0.31	-0.72	402,500	367
PACE	Pace (Pakistan) Ltd. - Real Estate Inv...	6.20	-0.10	-1.59	399,500	116
EFERT	Engro Fertilizers Limited.(XD) - Chemic...	75.50	-0.86	-1.13	397,500	252
FFC	Fauji Fertilizer Co. Ltd.(XD) - Chemical...	108.75	-0.91	-0.83	346,500	409

Indices Summary (Ctrl + E)

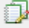
Exchange									
Advancers	Decliners	Un Changed	Total Symbols	Market	Number of Trades	Volume	Value	Status	
83	140	15	238	REG	22,124	40,538,840	2,347,199,232.1	OPN	
Indices									
Indices	Index	High	Low	Volume	Value				
KSE 100	32,612.50 (-98.06 ↘ -0.30 %)	32,737.11 (26.55 ↗ 0.08 %)	32,599.78 (-110.78 ↘ -0.34 %)	23,722,590	1,900,799,195.50				
KSE 30	19,173.41 (-137.37 ↘ -0.72 %)	19,310.78 (0.00 ↗ 0.00 %)	19,161.50 (-149.28 ↘ -0.78 %)	17,452,900	1,624,949,454.50				
KMI 30	56,742.93 (-155.62 ↘ -0.27 %)	57,020.06 (121.51 ↗ 0.21 %)	56,703.57 (-194.98 ↘ -0.34 %)	10,244,100	1,150,131,345.50				
BKTI	14,726.55 (-103.49 ↘ -0.70 %)	14,835.74 (5.70 ↗ 0.04 %)	14,695.10 (-134.94 ↘ -0.92 %)	2,241,700	311,522,356.00				
OGTI	12,143.92 (40.10 ↗ 0.33 %)	12,245.58 (141.76 ↗ 1.16 %)	12,103.82 (0.00 ↗ 0.00 %)	2,395,700	330,098,145.00				
Previous Indices									
Indices	Index	High	Low	Volume	Value				
KSE 100	32,671.20 (-286.75 ↘ -0.88 %)	33,080.70 (122.75 ↗ 0.37 %)	32,671.20 (-286.75 ↘ -0.88 %)	76,413,110	5,438,761,913.00				
KSE 30	19,282.90 (-239.75 ↘ -1.24 %)	19,571.80 (49.15 ↗ 0.25 %)	19,282.90 (-239.75 ↘ -1.24 %)	50,354,200	4,363,889,522.00				
KMI 30	56,779.80 (-775.68 ↘ -1.37 %)	57,752.30 (196.82 ↗ 0.34 %)	56,779.80 (-775.68 ↘ -1.37 %)	39,958,050	3,668,891,712.00				
ALLSHR	22,467.30 (-158.87 ↘ -0.71 %)	22,709.30 (83.13 ↗ 0.37 %)	22,467.30 (-158.87 ↘ -0.71 %)	135,516,540	6,843,187,486.00				

Cash Withdrawal Request (Alt + R)


Cash Withdrawal Request


Please select the account for which you wish to make Cash Withdrawal

Account No PIN

 [Cash Withdrawal Statement](#) [Forgot PIN?](#)

Available Amount	Withdrawal Amount	Remaining Amount
PKR <input type="text" value="-62,402,017.00"/>	- <input type="text"/>	= <input type="text" value="-62,402,017.00"/>

 **Cheque Delivery**
Please select this option if you would like us to send cheque at your registered Address.

 **Cheque Pickup**

Please select this option if you would like to pickup cheque from our branches.

Please enter your comments (if required)